

Public Wi-Fi

VostroNet Q2 Software Platform™

VostroNet
Smarter Internet

VostroNet's Q2 Software Platform™ is the perfect product to manage a modern public Wi-Fi environment.

Q2 is specifically built to enable fast and secure connectivity on a public Wi-Fi network. The Platform provides a fully automated onboarding process for users, with simple authentication through Facebook, Twitter, Google and other OAuth or SAML systems.

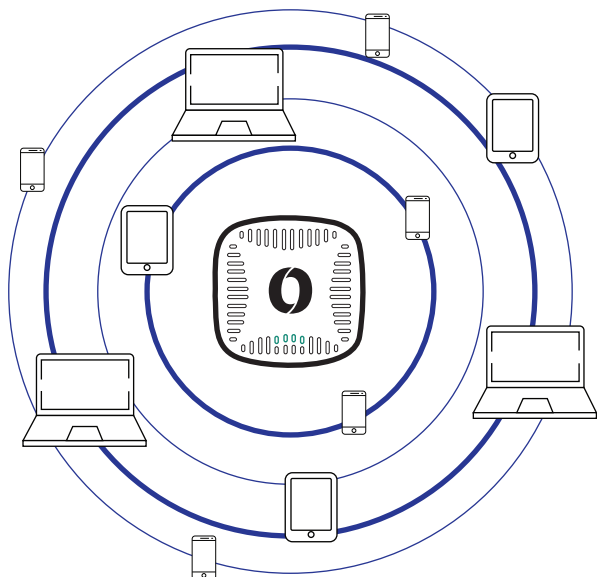
For IT Management, the Platform provides a simple point-and-click interface to administer different groups and users, minimising manual effort while enhancing network security and performance.

Overview

The Q2 Software Platform™ is a cloud-based Wi-Fi management system that centralises and automates the management of a Wi-Fi environment.

The Q2 Software Platform™ includes PrivateMesh™, a unique technology that enables a single network to isolate unrelated users and devices while also permitting communication within authorised groups or organisations.

Q2 software dramatically enhances the security and performance of a Wi-Fi ecosystem while materially reducing the IT resource required to set-up, administer and maintain the network. The software also includes powerful monitoring, analytics and auditing tools to enhance the toolkit for IT managers.



Q2 Components

- Network ecosystem dashboard
- Wi-Fi captive portal and landing page customisation tool
- Group, User, User Device Management
- Network device monitoring and management
- VostroNet PrivateMesh™ (dynamic multi-device group private vLan capability)
- Network device booking engine (optional)
- Network performance analytics and alerts
- Advanced network audit tools

Key Features

Seamless experience for Users

Fast and secure connection to the network, with seamless connection through the captive portal via simple authentication process (Facebook, Twitter, Google and other OAuth or SAML systems). Powerful security and performance features built into the software to enhance user experience.



Powerful network tools, easy to manage

Intuitive dashboard summarising network performance and device analytics. Advanced drill-down diagnostics and audit tools available for IT management and staff.

- Management can understand usage patterns, device types and performance of the network from a single dashboard
- Easily managed by front desk staff
- Integrated into third-party monitoring



Significantly reduced IT touchpoints

Q2 Software automates and simplifies the manual work required of IT staff in setting up and maintaining different Wi-Fi networks for different groups, freeing up time for value-add activities.



Security as a priority

Architecture designed with enhanced cybersecurity features. Enterprise-level encryption, DNS protection / malware prevention and PrivateMesh™ standard, with the option for strong family filtering. PrivateMesh™ isolates groups from each other while facilitating sharing and collaborating where authorised. Specialised network audit tools to facilitate active monitoring of users and devices.



Customised captive portal and landing page

Branding customised for easy onboarding. Easily adjusted by staff to provide up-to-date information, promotions and alerts to users.



Network device booking engine (optional)

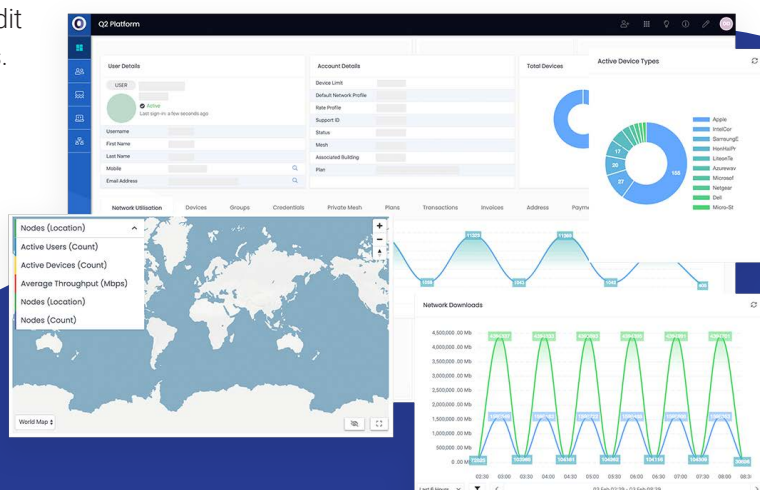
Q2 Software includes a booking engine to enable automated access periods for network devices or meeting room assets, enabling groups to have access to a meeting room TV or other Wi-Fi enabled devices for the period in which it is booked.



Network and Customer Analytics

Q2 provides detailed analytics valuable for both (1) network management and (2) user insight. Includes:

- Network-level analytics: includes throughput, no. of devices, no. of users, peak times
- Network device analytics: includes individual network component performance, dependent/precedent devices
- User and device analytics: Wi-Fi signal strength, authentication success, throughput, detailed logs on interaction with the network
- Live geo-location map of users within the precinct (optional)
- Live numerical data count of users in each designated area (optional)
- Demographic data (optional):
 - Languages spoken
 - Time spent in locations
 - Arrival times/departure times
 - Device types



Key Benefits Summary

Security

- ▶ User protection through enterprise-level encryption, DNS protection, malware prevention and PrivateMesh standard
- ▶ VostroNet's innovative PrivateMesh isolates groups from each other while facilitating sharing and collaboration

Customisable

- ▶ Customisable captive portal and landing page for easy onboarding
- ▶ Easily adjustable by staff
- ▶ Send promotions and alerts to network users

Analytics

- ▶ Obtain helpful network analytics on users and devices
- ▶ Live geo-location map of users within the precinct
- ▶ Understand your wireless environment with analytics on device number, peak times and number of users

Enhanced wireless environment

- ▶ Understand usage patterns, device types and network performance
- ▶ Easily managed platform for network administrators
- ▶ Integrates with third-party monitoring



For more information contact
hello@vostronet.com

vostronet.com



The VostroNet brand, VostroNet logos and VostroNet products are trademarks or registered trademarks of VostroNet and/or associated companies in Australia and other countries.

© 2020 VostroNet. All rights reserved.